

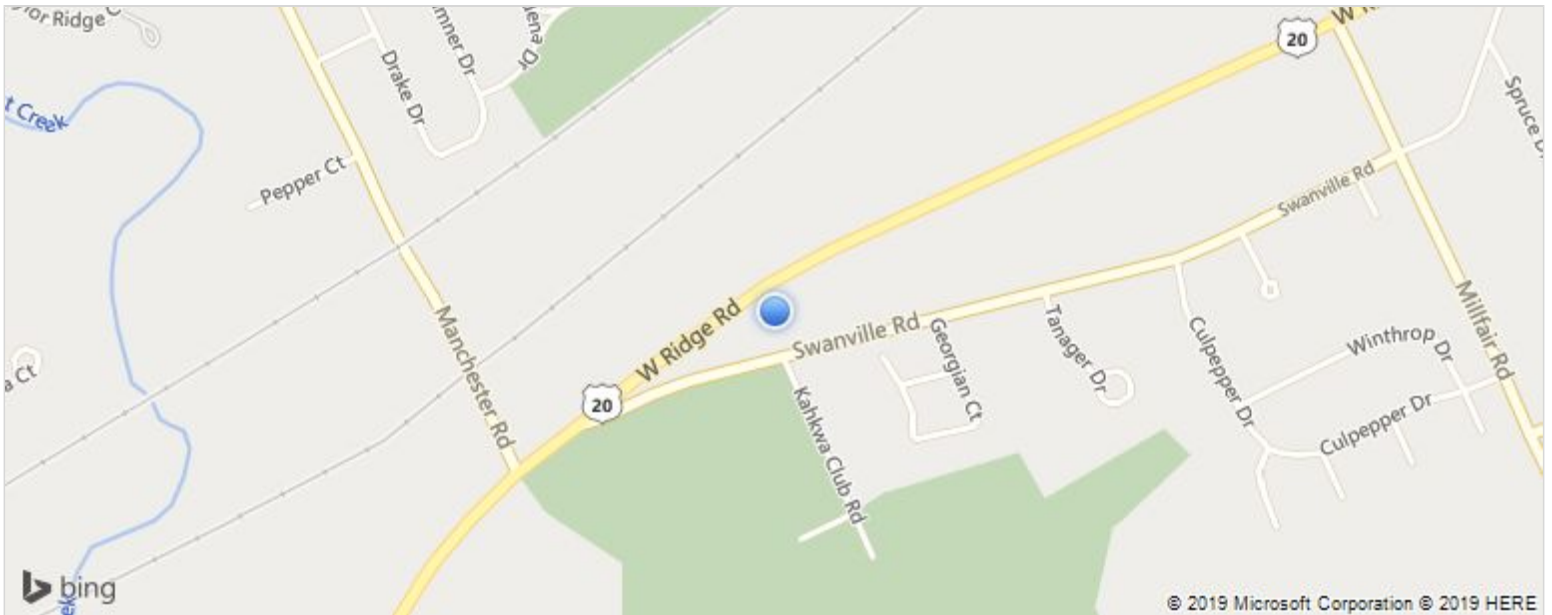
SALE

\$585,000
Vacant Land
139,808 SF

6301 W Ridge Road
Fairview, PA 16415 US



Property Type:	Vacant Land
Tax Year:	2019
Listing ID:	SSWJS6
MLS ID:	100615
Style:	Other Style
Building Size:	139,808 SF
Lot Size:	3.17 AC



6301 W Ridge Road Fairview PA, 16415 US

Online Profile <http://www.cbcworldwide.com/properties/profile/SSWJS6-Fairview-PA>

Property Description

Prime commercial real estate on West Ridge Road (State Route 20) east of the new Sneaky Pete's, across from the Kahkwa Club. 17,000 cars/day. Public utilities. Most of land cleared and shovel ready. Also includes Co Index #21-058-082.0-003.00 which currently has a rented single family home and detached garage on the property. Also, available for land lease at \$60,000/year/NNN (MLS 110244).

Additional Features

Available Date:

Jan 23rd, 2017

Taxes:

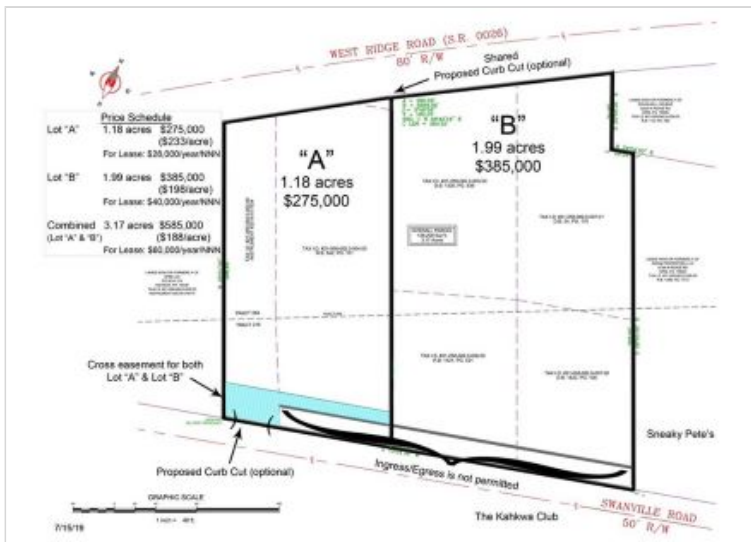
\$7,899

Bill Bucceri

bbucceri@wpperie.com

Direct 18148333331

Mobile 18148826781



<http://www.eriemoves.com/>
814-833-3331

Select, REALTORS
2601 West 26th Street
Erie, PA 16506

© 2019 Coldwell Banker Real Estate LLC, dba Coldwell Banker Commercial Affiliates. All Rights Reserved. Coldwell Banker Real Estate LLC, dba Coldwell Banker Commercial Affiliates fully supports the principles of the Equal Opportunity Act. Each Office is Independently Owned and Operated. Coldwell Banker Commercial and the Coldwell Banker Commercial Logo are registered service marks owned by Coldwell Banker Real Estate LLC, dba Coldwell Banker Commercial Affiliates. Each sales representative and broker is responsible for complying with any consumer disclosure laws or regulations.

The information provided is deemed reliable, but it is not guaranteed to be accurate or complete, and it should not be relied upon as such. This listing information should be independently verified before any person enters into a transaction based upon it.